

TUCSON





[More details](#)

Overtake the ordinary

Drive beyond the ordinary in the new TUCSON, combining a trend-setting design with advanced technology to uplift your experience.

Dynamism that exudes boldness

Behold, the new TUCSON's evolved signature parametric jewel design.
Here to showcase a more prominent and dynamic character than ever before.



Exterior

Reject the ordinary with eye-catching jewel-like elements of the front lamps as well as around the sides - boldly upgraded to allow you to stand out from the crowd.



Parametric Jewel Hidden Signature Lamps / Radiator Grille / Front Bumper



Roof Rail / Panoramic Sunroof
19-inch Alloy Wheels



LED Rear Combination Lamps / Rear Bumper / Parametric Jewel Surfaces

Interior

The cabin's wide horizontal design wraps around the interior, enveloping the passengers with a seamless architecture that integrates technology and style.



Wrap-Around Architecture Design



Ambient Mood Lamp / Multi-tray
Floating-type Console



Panoramic Curved Display 12.3-inch (Cluster) + 12.3-inch (AVNT)

Make room for more. Its best-in-class cargo space and roomy interior support various lifestyles and activities, offering more versatility than ever.



1st & 2nd Row Seat



Integrated Memory Seat
Walk-In-Device (Passenger)



Folding Seats / Remote Folding System



Standard



6:4 Folding



Full Folding

Convenience

A reinvented layout with a host of intuitive technologies that enable an effortless and convenient on-the-road experience.



Fingerprint Authentication



Wireless Power Charger (WPC)



12-inch Head-up Display (HUD)



Column-type Shift by Wire (SBW)

Performance

Equipped with next-generation powertrains, ensuring top-tier performance and optimal solutions for various driving scenarios.

Smartstream Gasoline 2.0 MPI Engine 156 Maximum Power PS/6,200 rpm 19.6 Maximum Torque kgf-m/4,500 rpm

Smartstream Gasoline 1.6 T-GDI Engine 180 Maximum Power PS/5,500 rpm 27.0 Maximum Torque kgf-m/1,500-4,500 rpm



4WD HTRAC / Terrain Mode (Sand, Mud, Snow)

TUCSON AWD provides optimal driving performance through actively distributing driving force to the front and rear wheels according to various driving situations.

Hybrid

Enjoy a new way of driving, balancing a smooth ride with more efficiency.

| | | | | | | |
|---|---------------|--------------------------|----------------------------|-----------------------|---------------------------|---------------------------|
| Smartstream Gasoline 1.6 T-GDI Hybrid Engine | Engine | 180 Maximum Power | 27.0 Maximum Torque | Electric Motor | 47.7 Maximum Power | 264 Maximum Torque |
| | | PS/5,500 rpm | kgf-m/1,500-4,500 rpm | kW | | Nm |



Hybrid Model



Hybrid Exclusive Features
Paddle Shifter-Regenerative Braking Mode

e-Comfort Drive



When passing speed bumps, this hybrid technology manages the motor to reduce vehicle pitch motion and provide a smooth ride.



When accelerating, the hybrid system controls the vehicle's motion such that the driver experiences less shaking and more linear acceleration.

e-Dynamic Drive



When the vehicle approaches a turn, the hybrid system regulates the vehicle's movement to execute torque vectoring while simultaneously maintaining the ideal level of tire grip for dynamic handling performance.



During lane change, this function provides a quick yaw response and improved cornering stability.

N Line

Packaged with an exclusive design, the new TUCSON N Line awaits those who desire that extra touch of sportiness.



N Line Exclusive Radiator Grille



N Line-Exclusive 19-inch Alloy Wheels / Body-color Cladding
N Line-Exclusive Single Twin Tip Muffler



N Line-Exclusive Interior (N Line Emblem Steering Wheel / Red Stitching)



N Line-Exclusive Suede Seats

Safety

The new TUCSON is packed with reliable features to protect you from the unexpected and ensure you leave no one behind.



Blind-Spot View Monitor (BVM)



6 Airbags



Surround View Monitor (SVM)



Rear Occupant Alert (ROA)

Hyundai SmartSense



More details



Forward Collision-Avoidance Assist (FCA, Junction Turning)

Alerts the driver if the vehicle ahead is slowing down too quickly or if there is the potential for a forward collision with stationary vehicles, pedestrians, cyclists ahead, or approaching vehicles on the road, and activates the brakes in the event of an impending collision. Forward Collision-Avoidance Assist also brakes automatically to avoid an impending collision with vehicles or cyclists ahead on the road or approaching from either side while making a left turn at an intersection.



Lane Following Assist (LFA)

Lane Following Assist helps center the vehicle in the lane.



Blind-Spot Collision-Avoidance Assist (BCA)

Blind-Spot Collision-Avoidance Assist (BCA) warns you if there is a risk of collision with a rear side vehicle in the blind-spot while changing lanes. When forward exiting a parallel-parking spot, if there is a risk of collision with a vehicle approaching from behind, it automatically assists with emergency braking.



Lane Keeping Assist (LKA)

If driving above a certain speed and the driver leaves a lane without the turn signal switch being operated, it provides a warning. When a lane departure is detected, it automatically assists with steering to help prevent leaving the lane.

* Advanced Driver Assistance Systems (ADAS) is designed to provide assistance with the operation of a vehicle, drivers must drive with caution at all times.

* Functions may not operate depending on the surroundings and driving conditions. Refer to the instruction manual for details.

* Actual specifications may vary depending on the trim, powertrain and specifications selected.

* Advanced Driver Assistance Systems (ADAS) is designed to provide assistance with the operation of a vehicle, drivers must drive with caution at all times.

* Functions may not operate depending on the surroundings and driving conditions. Refer to the instruction manual for details.

* Actual specifications may vary depending on the trim, powertrain and specifications selected.



More details



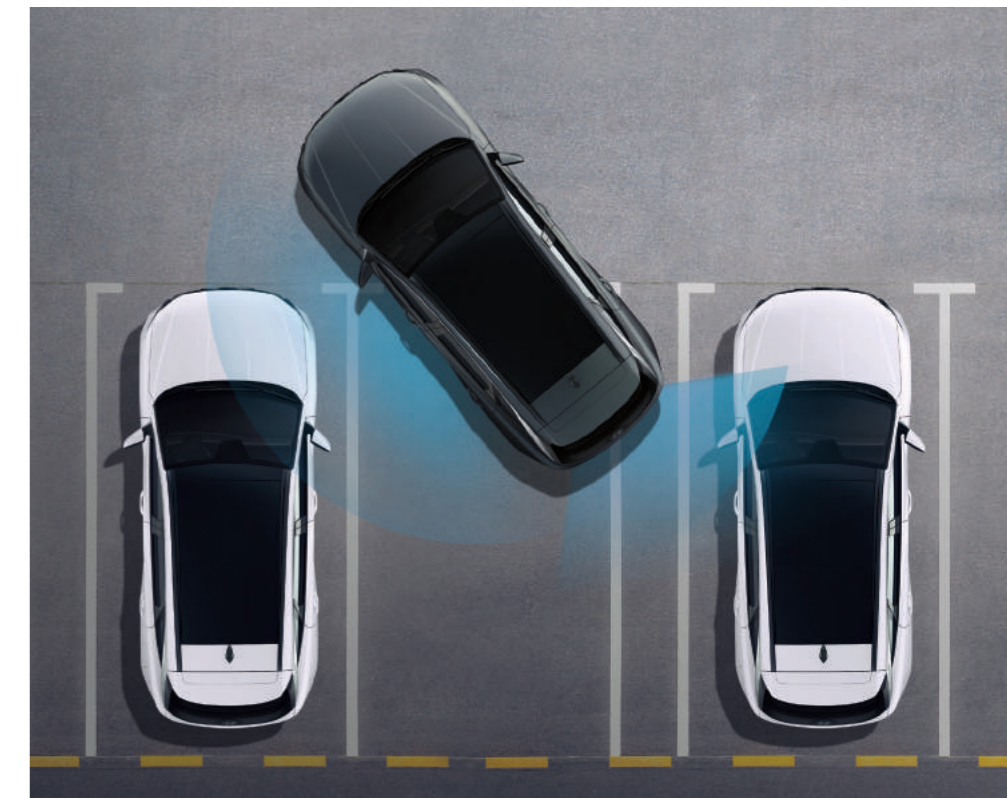
Smart Cruise Control (SCC)

Smart Cruise Control (SCC) helps maintain distance from the front vehicle and drive at a speed set by the driver. Automatically stops when the front vehicle stops and automatically starts when the front vehicle departs within a short time.



Parking Collision Avoidance Assist (PCA)

Reverse Parking Collision Avoidance Assist (PCA) provides a warning if there is a risk of collision with a rear object while reversing. After the warning, if the risk of collision increases, it automatically assists with emergency braking.



Forward/Side/Reverse Parking Distance Warning (PDW)

Forward/Side/Reverse Parking Distance Warning (PDW) warns against collisions with objects around the vehicle at low speeds.

* Advanced Driver Assistance Systems (ADAS) is designed to provide assistance with the operation of a vehicle, drivers must drive with caution at all times.

* Functions may not operate depending on the surroundings and driving conditions. Refer to the instruction manual for details.

* Actual specifications may vary depending on the trim, powertrain and specifications selected.

* Advanced Driver Assistance Systems (ADAS) is designed to provide assistance with the operation of a vehicle, drivers must drive with caution at all times.

* Functions may not operate depending on the surroundings and driving conditions. Refer to the instruction manual for details.

* Actual specifications may vary depending on the trim, powertrain and specifications selected.

Features



17" alloy wheels (Standard)



18" alloy wheels (Optional)



19" alloy wheels (Optional)



19" alloy wheels (N-Line)



Standard



Optional



Full LED Headlamps (MFR Type)



Dark Metal Paint Radiator Grille (Clear Type DRL)



Turn Signal Indicator LED Outside Mirror



Rear Combination Lamps (Bulb Type)



4.2-Inch Color LCD Cluster



Manual Air Conditioning



Heated Steering Wheel



USB-C Data/Charging Ports



Full LED Headlamps (Wide Projection with IFS Function)



Dark Tinted Chrome Radiator Grille (Hidden Lighting DRL)



Safety Power Window



LED Rear Combination Lamps



BOSE Premium Sound System



Full Auto Air Conditioning System



Front Heated and Ventilated Seats



Luggage Screen

Interior colors

Standard



GL

Black monotone cloth



GL

Black gray two-tone cloth

Optional



Black monotone leather



Black gray two-tone leather



Brown color package leather

Color combination chart

| Trim | | | Exterior | | | | | | | | |
|----------|---|--|--------------------------|----------------------------------|---------------------------|----------------------------|--------------------------------|-----------------------------|--------------------------|---------------------------|------------------------|
| | Interior | | Creamy white pearl (TW3) | Shimmering silver metallic (R2T) | Titan gray metallic (R4G) | Amazon gray metallic (A5G) | Cashmere bronze metallic (NA7) | Ultimate red metallic (R2P) | Ocean indigo pearl (PS8) | Phantom black pearl (TCM) | Pine green matte (RB2) |
| Standard | Black monotone cloth | | ● | ● | ● | ● | ● | ● | ● | ● | ● |
| | Black gray two-tone cloth | | ● | ● | ● | ● | ● | ● | ● | ● | ● |
| Optional | Black monotone leather | | ● | ● | ● | ● | ● | ● | ● | ● | ● |
| | Black gray two-tone leather | | ● | ● | ● | ● | ● | ● | ● | ● | ● |
| | Brown color package leather | | ● | ● | ● | ● | ● | - | - | ● | ● |
| | Green three-tone leather | | ● | ● | ● | ● | ● | - | - | ● | ● |
| N-Line | Black monotone suede + leather with red stitching | | ● | - | ● | - | - | ● | - | ● | - |

Optional



Green three-tone leather

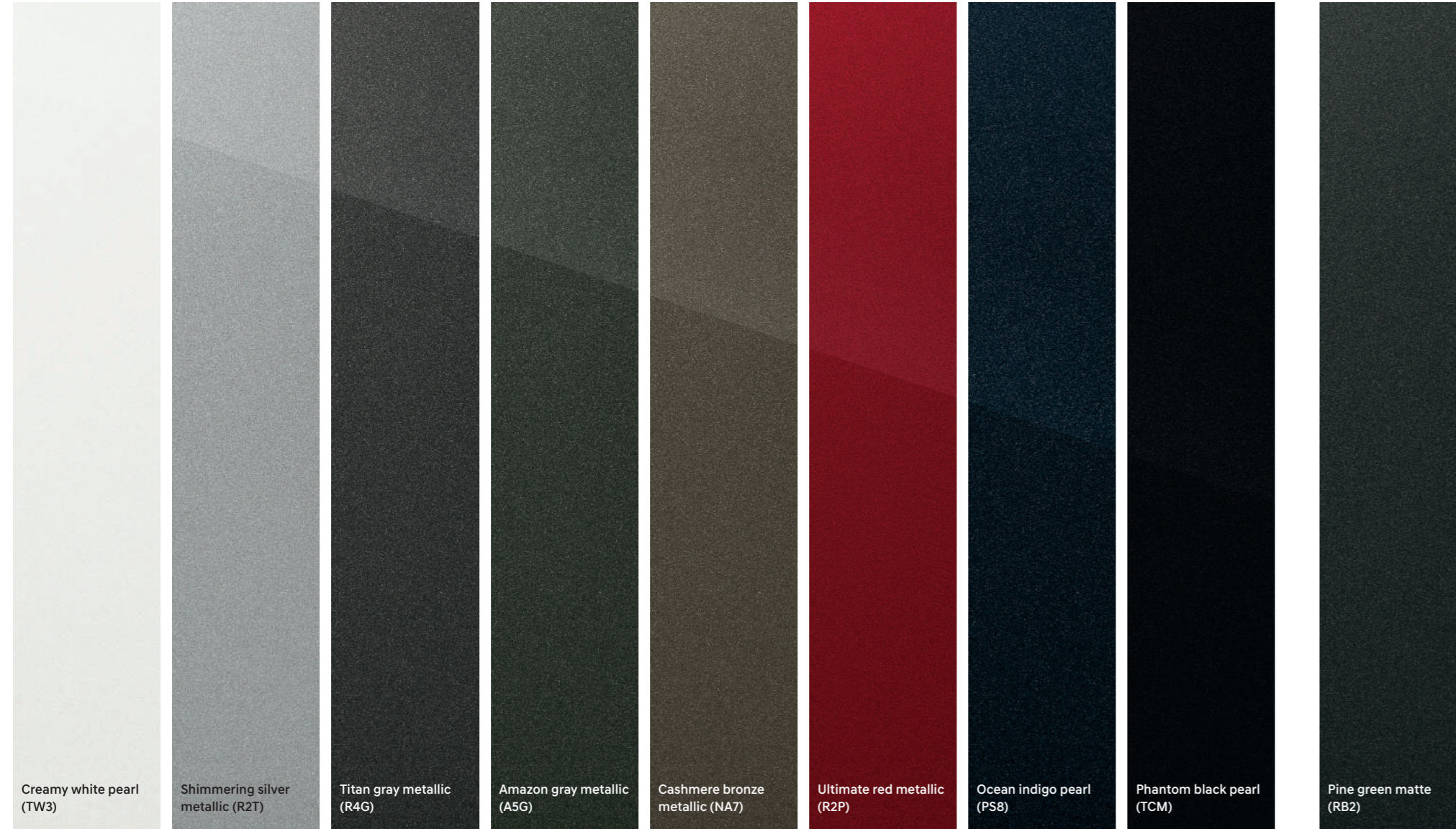
N Line



Black monotone suede + leather with red stitching

Exterior colors

Pearl / Metallic colors



Matte colors



Specifications

| Classification | | Smartstream G2.0 MPI | Smartstream G1.6 T-GDi | Smartstream G1.6 T-GDi HEV |
|--------------------|---|---------------------------------|---------------------------|----------------------------|
| Engine | Type | 2.0 MPI | 1.6 Turbo GDi | 1.6 T-GDi Hybrid |
| | Displacement (cc) | 1,999 | 1,598 | 1,598 |
| | Max. Power (PS / rpm) | 156 / 6,200 | 180 / 5,500 | 180 / 5,500 |
| | Max. Torque (kgf-m / rpm) | 19.6 / 4,500 | 27.0 / 1,500-4,500 | 27.0 / 1,500-4,500 |
| Motor | Max. Power (kW) | - | - | 47.7 |
| | Max. Torque (Nm) | - | - | 264 |
| Suspension | | | | |
| Front | | McPherson Strut Type | | |
| Rear | | Multi-Link Type | | |
| Tire | | | | |
| | | 235/65R17, 235/60R18, 235/55R19 | | |
| Dimensions | | | | |
| Head Room (mm) | 1st row (w/Sunroof) / 2nd row (w/Sunroof) | | 1,019 (968) / 1,002 (990) | |
| Leg Room (mm) | 1st row / 2nd row | | 1,052 / 1,050 | |
| Shoulder Room (mm) | 1st row / 2nd row | | 1,464 / 1,422 | |

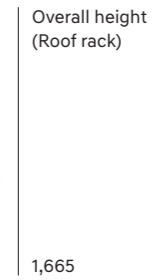
- The above values are results from internal testing and are subject to change after validation.
- Some of the equipment illustrated or described in this catalog may not be supplied as standard equipment and may be available at extra cost.
- Hyundai Motor Company reserves the right to change specifications and equipment without prior notice.
- The color plates shown may vary slightly from the actual colors due to the limitations of the printing process.
- Please consult your dealer for full information and availability on colors and trims.



Wheel tread (19" Wheel)* 1,615
Overall width 1,865



Wheelbase 2,755
Overall length 4,640



Overall height (Roof rack) 1,665



Wheel tread (19" Wheel)* 1,622

Unit : mm * Wheel tread • 17" Wheel (Front/Rear) : 1,620/1,627 • 18" Wheel (Front/Rear) : 1,615/1,622

Dealer stamp