

AVANTE N





Never just drive. AVANTE N

From everyday urban driving to the most demanding circuits, the AVANTE N lets you pursue a revamped lifestyle with a design optimized for peak performance, coupled with enhanced features and upgraded value.

Exterior design

The lowered and wider design is accentuated with dynamic details and bold colors, maximizing the AVANTE N's already sporty image.



AVANTE N Full Option (Performance Blue)



N Exclusive Radiator Grille



N Exclusive Wing-type Rear Spoiler
N Exclusive Dual Single Tip Muffler

Interior design

Revel in the high-performance interior, featuring a wide and sleek layout with N-specific details and colors.



AVANTE N Full Option (Black Monotone with N Light Sport Bucket Seats and Blue Accents)



N Light Sports Bucket Seat (Alcantara Suede + Synthetic Leather Combo)

Convenience

Experience tailored driving convenience on both the circuit and during the most varied of daily driving.



N Exclusive Entertainment Mode (N Track Map, Hyundai N App)

High-performance exclusive N entertainment features allow intuitive monitoring and control of the vehicle through the cluster and navigation screens. Information such as shift timing, coolant temperature, engine oil temperature, torque, turbo boost pressure, and brake pressure are readily available.

N Track Map: Tracks the driver's route on the circuit for more effective race track strategizing and improves driving skills.

Hyundai N App: Offers circuit driving analysis (lap timer, driving record sharing, circuit details) for Hyundai's high-performance N models.

N Sound Equalizer (NSE): Amplifies the distinctive N exhaust notes and dynamic driving sound through the vehicle's internal speakers. Choose from Sporty, High Performance, TCR, RALLY modes and even adjust tone and volume.

※ Infotainment system screen images may differ after updates.



Surround View Monitor For safe parking, the surround view monitor shows the situation around the vehicle in crystal-clear image quality by applying a high-definition camera and digital video transmission method.



Digital Key 2 Touch Controls door locking/unlocking and ignition with iPhone, Apple Watch, and Android smartphones, i.e., Samsung smartphones. Pairs with up to seven devices for easy access. *Visit Hyundai's website for the list of devices compatible with Digital Key 2 Touch.

Electric Parking Brake with Auto Hold The parking brake can be activated or deactivated at the touch of a button, and the Auto Hold function automatically maintains the brakes when stopped for added convenience.



USB-C Charger (1 in the front row, 2 in the back row) The vehicle is equipped with USB charging ports to make charging mobile devices convenient for both front and rear passengers.



Built-in Camera A built-in high-resolution dash cam allows recorded footage to be viewed on the AVN screen or shared on social media via smartphone app integration.

High performance

Discover dynamic driving performance thanks to the AVANTE N's powerful engine and differentiated high-performance specifications.

N Exclusive Gasoline 2.0
Turbocharged flat power engine

280 **Max. Output** 290 PS with NGS
PS/5,500 ~ 6,000rpm

40.0 **Max. Torque**
kgf·m/2,100 ~ 4,700rpm



AVANTE N Full Option (Performance Blue)



N Corner Carving Differential (e-LSD) Electronic differential limiting that ensures optimal engine power is delivered to the drive wheels (front left and right wheels), enhancing driving performance and compensating for power loss.

Electronic Controlled Suspension (ECS) Electronically controls each shock absorber's damping force based on driving mode and real-world conditions to offer an optimal driving experience.



Rear Stiff Bar The H-shaped rear stiff bar not only enhances driving and handling by increasing chassis rigidity but also adds a splash of sporty charm with its red hue.

N Exclusive High-Performance Large Brakes Enjoy enhanced braking power and fade performance with large discs, high-friction pads, and air guides, with a design accentuated by red calipers.



4-Point Strut Ring Rooted in racing car origins, the enhanced strutting features additional connecting joints to deliver even more robust performance. Positioned within the engine bay, the 4-point strut ring provides a rigid link between the suspension and chassis, amplifying driving and handling precision.

Integrated Drive Axle (IDA) By leveraging axle-integrated technology found in rally cars, the Integrated Drive Axle is lighter and features improved lateral rigidity resulting in improved driving performance accompanied by a reduction in noise and vibration.

Rack-mounted Motor Driven Power Steering (R-MDPS) Steering agility is accentuated with rack-driven specifications and sportily-tuned gear ratios offering direct tactile feedback. High-performance control logic improves steering consistency and stability even under extreme driving conditions.



Launch Control Regulates engine torque and clutch usage to minimize time needed for acceleration from a standstill, ensuring a fast and efficient start.



REV Matching During downshifts while driving, REV Matching synchronizes the engine and transmission revolutions to reduce shifting shocks, enabling quicker shifts and ensuring swifter reacceleration after deceleration.

* After activating 'Launch Control', firmly press the brake pedal all the way down with your left foot and swiftly push the accelerator all the way down with your right foot to enter launch mode.



N Power Shift (NPS) Maximizes engine torque and boosts transmission responsiveness during acceleration, delivering a powerful sensation of being pushed forward, heightening the fun factor when driving.



N Track Sense Shift (NTS) When corner-heavy driving, such as on tracks, is detected, a transmission program optimized for the driving intensity automatically activates to enable more dynamic driving.



N Green Shift (NGS) When rapid acceleration is required, pressing the NGS button activates maximum engine and transmission performance for 20 seconds. Boosts engine output up to 290 horsepower (Cannot be reactivated for 40 seconds after use).

Safety

Revel in advanced safety and convenience to enhance the safety of not only the driver but also the passengers in across a diverse range of daily driving contexts.



Front/Rear Parking Distance Warning Provides alerts to avoid collisions with objects in the vicinity of the vehicle at low speeds.



8-Airbag System The new AVANTE N is equipped with dual-stage advanced airbags for the driver and front passenger seats, as well as side airbags between the front and rear rows, curtain airbags for a total of 8 airbags to ensure all-around collision safety.

Rear Occupant Alert Alerts can be activated or deactivated in user configuration mode on the cluster, and automatically detect whether there are occupants in the rear row of the vehicle.

Hyundai SmartSense

The AVANTE N features an even more advanced driver assistance system to protect drivers and occupants from unforeseen dangers.



Blind-spot Collision Warning(driving)/Blind-spot Collision-avoidance Assist(forward exit)

Alerts the driver of the potential for a collision from the rear when the turn signal indicator is switched on for lane changes. The system also helps the driver activate the brakes in the event of an impending rear or side collision when pulling away forward from a parallel parking space.

Rear Cross-Traffic Collision Prevention Assist

An alarm sounds when there is a risk of a collision is detected with a vehicle approaching from the right or left side when reversing. If the risk persists, the brakes are activated automatically.

Navigation-based Smart Cruise Control (in reduced speed zones and on curves)

Maintains a safe speed according to the road conditions on expressways and highways. Before entering curves or reduced speed zones, the system automatically reduces the vehicle's speed and returns to the original speed afterwards.

Highway Driving Assist

On expressways and highways, the system maintains a safe distance from the vehicle in front and helps keep the vehicle centered in its lane at a set speed, even on curves.

Forward Collision-Avoidance Assist (Vehicle/Pedestrian/Cyclist/Vehicles Traveling in the Opposite Direction at Intersections)

An alarm sounds when there is a risk of collision. If the vehicle in front suddenly decelerates or there is a high risk of collision with a vehicle, two-wheeler, pedestrian, or cyclist ahead, the system automatically provides braking assistance. When making a left turn at intersections with the turn signal on, and there is an increased risk of a collision with oncoming traffic, whether it's a vehicle or two-wheeler, the brakes are activated automatically.

Avante N



N Exclusive 19-inch alloy wheels & Michelin tires



N Exclusive 19-inch ultralight forged wheels & Michelin tires



AVANTE N Full Option (Performance Blue)



N Logo Smartkey
Depth Adjustable Cup Holders



Ambient Mood Lamp
1st-row Heated Seats *N Exclusive Authentic Leather Seats with Heating and Ventilation.



Wireless Smartphone Charger
2nd-row Heated Seats



2nd-row Air Vents
Double-glazed Sound Insulation Glass (windshield)



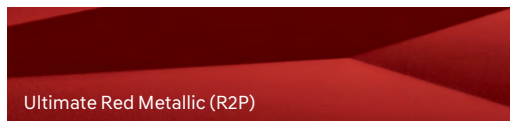
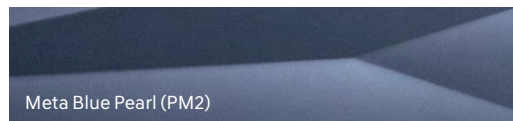
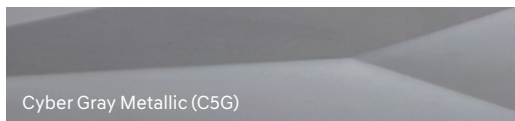
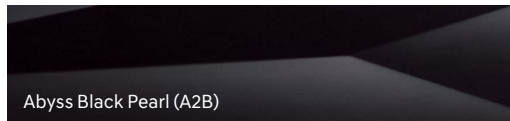
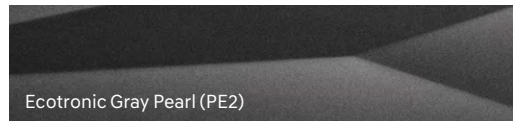
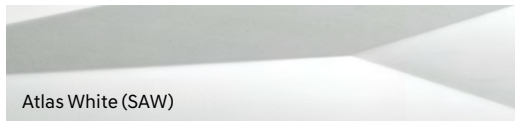
* Specifications in this catalog may vary by model and include optional features. For detailed specifications for each model, please refer to the monthly price list.

Color

Interior colors



Exterior colors



* The above colors may differ slightly from the actual color of the vehicle.

N Performance

N Performance represents a fusion of Hyundai Motor's technical prowess, expertise, and N DNA, offering unprecedented high-performance as a customized brand.

New car options

Carbon Exterior Package



Carbon Rear Spoiler



Carbon Side View Mirrors

Carbon Dual Single Tip Muffler



Carbon Rear Muffler Tips

Performance Intake Kit



High Performance Intake System

Alcantara Interior Package



Alcantara Steering Wheels



Alcantara Gear Knob & Boot



Alcantara Parking Lever & Center Console

Walk-In Interior Package



N Performance Exclusive mats and metal door scuffs

Monoblock Brakes & 19-inch Forged Wheels (Matte Black) Package



N Performance Brake System
(Monoblock 4-piston calipers, bolt-on hybrid discs)



19-inch Matte Black Forged Wheels
(with Real Carbon Wheel Caps)
* Wheels can be purchased separately

Monoblock Brakes & 19-inch Forged Wheels (Machine Polished) Package



N Performance Brake System
(Monoblock 4-piston calipers, bolt-on hybrid discs)



19-inch Machined Polished Forged Wheels
(with Real Carbon Wheel Caps)
* Wheels can be purchased separately

* The Alcantara Interior Package for the AVANTE N equipped with an electronic parking brake (including auto-hold) does not include the Alcantara parking lever.

Aftermarket

※ Aftermarket products are available at N Performance Shop.



H&R Lowering Springs



Sabelt Tow Strap



N Performance Stilo Venti WRC Helmet



Sabelt 4 Point Harness Seatbelt



Ferodo Brake Pads for Track/Sports



N Performance Stilo Venti Trophy Helmet



Sabelt 6 Point Harness Seatbelt

Hyundai N app



- Can use additional functions after acquiring Bluelink membership(e.g. link to driving data, ranking data).
- Stores/analyzes actual driving data collected while on the track.
- Provides circuit driving data to other app users.
- Can be used simultaneously on smartphone and tablet PC(with at least Android 6.0 or iOS 11.0).
- Provides data on engine oil and coolant temperatures, G-Force, RPM, torque, lap times, and more.
- How to download: Search "Hyundai N" on Google Play(Android) or App Store(iPhone)



Hyundai Motors' connected service that makes car maintenance easy no matter the place or time of day



BlueLink website



Information on service registration



Information on plans and prices



Download the BlueLink app



Safety security

- Automatic notification of airbag deployment
- SOS emergency response
- Theft tracking
- Theft alert
- Driver Attention Warning
- Advanced Rear Occupant Alert
- **Electric car battery monitoring**
*Battery malfunction alert (for BlueLink members only)



Remote control

- Remote air conditioner control
- Remote charging control
- Remote door open/lock
- Remote window control
- Parked location confirmation
- Destination data sending, and more!



11 functions

Vehicle management

- Car diagnostics test
- Journey report
- Over-the-Air update
- Low battery notification
- Safe driving habits
- Remote smart diagnosis



Navigation

- Road directions (BlueLink)
- Provision of traffic information
- Portal site search of surrounding area
- Sharing of current car location
- Directions to destination



*Car purchasers who are also first-time BlueLink members will receive Basic Service free of charge for five years from the date of membership application. For the subsequent five years, they will be provided with Light Service (SOS emergency response, automatic notification of airbag deployment, traffic information, electric car battery monitoring, and etc.) free of charge.

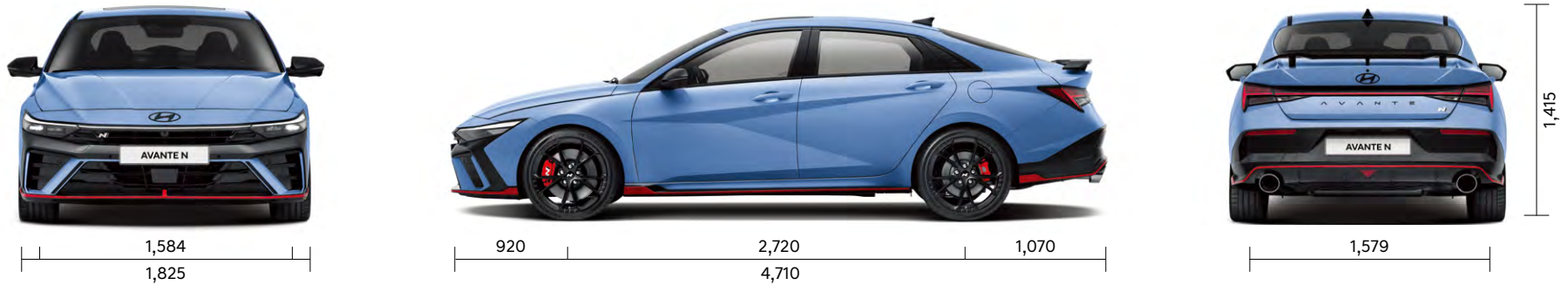
*All of the above-named services (e.g. Hyundai Digital Key 2, Hyundai CarPay, OTA software update, and electric car battery monitoring) can be used by BlueLink members only.

*Electric car battery monitoring: In the event a battery malfunction is detected, a notification is sent to the driver (BlueLink members only).

*High-quality audio and OTT & video streaming are add-on services that require a separate purchase of BlueLink's streaming data plan. You must also link your streaming platform (Genie Music, Melon, WATCHA, Wavve, or YouTube Premium) accounts to the app or the car. Standard Youtube and U+ Mobile TV can be used without logging in.

*Inquiries: BlueLink KakaoTalk Customer Service Center (enter 'BlueLink' in KakaoTalk search screen and add as friend)

Dimensions



Type	Gasoline 2.0 Turbo
Overall length (mm)	4,710
Overall width (mm)	1,825
Overall height (mm)	1,415
Wheelbase (mm)	2,720
Tread (front) (mm)	1,584(19")
Tread (rear) (mm)	1,579(19")
Engine type	N Exclusive Gasoline 2.0 Turbo Flat Power
Displacement (cc)	1,998
Maximum power (PS/rpm)	280/5,500 ~ 6,000
Maximum torque (kg-m/rpm)	40.0/2,100 ~ 4,700
Fuel tank capacity (ℓ)	47

Type	Fuel type	Displacement (cc)	Curb weight (kg)	Tires (inch)	Transmission	Grade	CO ₂ emissions (g/km)	Fuel economy (km/ℓ)		
								Combined	City	Highway
N Exclusive Gasoline 2.0 Turbocharged flat power	Gasoline	1,998	1,520(C)	19	8-speed DCT	4	163	10.4	8.9	12.9
	Gasoline	1,998	1,480	19	4 manual 6-speed	4	159	10.6	9.4	12.5

* Curb weight (C): Curb weight based on certified fuel economy rating with Built-in Cam.

Please follow designated speed limits for maximum fuel efficiency.

*Fuel efficiency above is based on the standard model and may differ from actual fuel efficiency in accordance with road conditions, driving habits, vehicle load, vehicle maintenance and ambient air temperature. *Images in the catalog may show optional equipment and may differ from the actual vehicle purchased. *The specifications, colors, and specifications shown in this catalog are subject to change to improve the appearance and performance of the vehicle. *The engine performance above is the net value, which has been a legal requirement from the Ministry of Land, Infrastructure and Transport since 1997. It represents a fuel efficiency measuring technique that incorporates emission gas resistance. Net value may be slightly lower than gross value. *Leather seats include some synthetic leather. For key parts of combination seats, natural leather is used. *Vehicle colors in this publication may vary from actual vehicle colors. *Hyundai Motor Company sells vehicles only through Car Masters in its branches and agencies while engaging in good trade practices at the same prices for the same products all over the country.

***Using oils and fuels of inadequate quality or performance can cause damage to the vehicle. *For details on new technologies and new specifications listed in this catalog, please refer to the Owner's Manual.**

Images in this catalog are intended to enhance customer understanding and focus on high-end models and optional features. The features introduced herein may vary by trim model, package, powertrain, and exterior color. Please refer to the monthly price table for more detailed features specific to each model.



The advanced technology of Hyundai's Bluelink system helps keep both the driver and the vehicle safe in any situation. Bluelink is always there to keep you safe, regardless of the location or time of day. Experience the unique joy of safe and comfortable driving.

Remote Control

You cannot remember if you locked your car doors? Lock them via the Blue Link app. Check the status of your car with Bluelink.

Safety security

The BlueLink Center works 24 hours a day, 365 days a year. If an airbag opens due to an accident, the Center automatically detects your location and takes appropriate actions according to the situation, such as contacting the police, ambulance, insurance company, etc.

Vehicle Management

Services include real-time trouble detection while the vehicle is running and regular vehicle inspections on pre-arranged dates. In the event of vehicle trouble, immediate professional consulting is available, and you may conveniently make reservations for repair at the time and location of your choice.

Navigation

This function enables the driver to conveniently search for destinations through voice command and suggests optimum routes based on an independent analysis of real-time traffic information. The driver can search a database of upto-date information to find even newly created destinations.

* 5 years of BlueLink service is provided for free upon purchase of a vehicle. Light Services (emergency SOS dispatch, automatic airbag deployment notification, monthly reports, traffic updates, etc.) are provided at no charge for an additional 5 years afterwards. * Certain features (Digital Key 2 Touch, Hyundai CarPay, Wireless Software Updates (OTA), Wireless Infotainment Updates, etc.) are available only upon BlueLink registration. * During the Light Service period, you can still utilize the Wireless Software Updates (OTA). * For inquiries: Contact the BlueLink KakaoTalk Customer Care Center (Add 'Bluelink' via the KakaoTalk search window).



AVANTE N
Digital Catalog
(PC/Tablet)



AVANTE N
Digital Catalog
(Mobile)



AVANTE N
Homepage



Hyundai Certified
Secondhand Vehicle
Information on
purchasing
secondhand vehicles



Hyundai Motor Company ranked first in all categories in the 2024 National Customer Satisfaction Index survey (compact, mid-size, large, compact RV, large RV and EV)



Hyundai Motor Company ranked first in the 2024 Korean Customer Satisfaction Index (KCSI) across all survey categories (passenger vehicle, RV, compact car, EV)



2023 KS-QEI (Korea Standard-Quality Excellence Index)
Ranked 1st in 10 surveyed sectors
(All passenger vehicle segments, SUV-Small/
Midsize/Large, Luxury Sedan E-Segment, Large
Luxury SUV, EV, After-Sales Services)



Ranked first place in the automobile warranty service category of the Korean Standard-Service Quality Index (KS-SQI) for nine consecutive years

The images used in this brochure are intended to enhance customers' understanding and are focused on high-end models and optional features. The features introduced in this brochure may vary from model to model. Please refer to the monthly price table for more detailed features of each model.